






# Sky Window

New    

Recessed or surface mounted luminaire with daylight control and sunlight spectrum

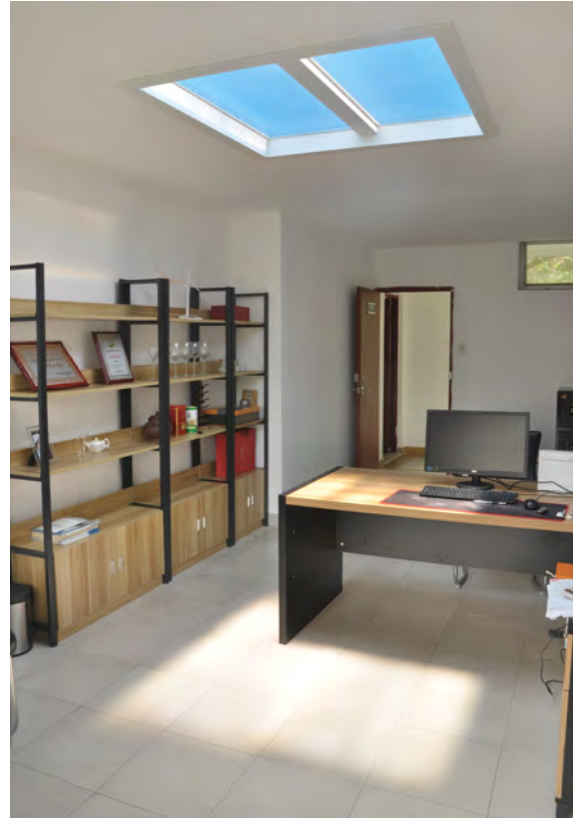


- Connection:** 220 - 240 V / 50 - 60 Hz  
**Life:** L70/B10 ≥ 50.000 hours  
**Energy efficiency:** this luminaire contains built-in, irreplaceable LED lamps of the energy efficiency class A to A++  
**Colour rendering:** Ra/CRI > 95  
**Special features:**
- Daylight has a huge impact on the well-being. Sky Window brings sunshine wherever it is needed.
  - Create natural daylight indoor, thanks to full spectrum LEDs (Sunlike-LED) and a smart daylight control.
  - The daylight ambience is realized by the simulated and illuminated 3D sky and the connectible solar radiation. Amazing real daylight effects can be achieved.
  - Due to the used Sunlike-LED, the colour rendering is Ra > 95, the same applies to the R9 value.
  - The colour appearance can be adjusted continuously from 2,700 K to 10,000 K using the Control Panel or app.
  - The luminous intensity is 3,000 lux (600x600 mm) and 4,500 lux (600x1200 mm) at a height of 3 meters.
  - The smart light control enables the 24 hour rhythm and if necessary even analogously to the different time zones worldwide.
  - Up to 64 Sky Window luminaires can be controlled and switched in parallel.

Article No.	Description	Illustration	Features	Weight
202 030 610 02	Sky Window 600 x 600mm 112W incl. milled frame		<ul style="list-style-type: none"> <li>• incl. transformer</li> <li>• white</li> </ul>	12000 g
202 030 610 01	Sky Window 1200 x 600mm 250W		<ul style="list-style-type: none"> <li>• incl. transformer</li> <li>• white</li> </ul>	15500 g
202 010 166 02	Milled frame Sky Window 1200 x 600mm		<ul style="list-style-type: none"> <li>• white</li> </ul>	4000 g
202 010 166 12	Mounting frame Sky Window 1200 x 600mm		<ul style="list-style-type: none"> <li>• white</li> </ul>	10500 g
208 050 050 21	Control Panel Sky Window		<ul style="list-style-type: none"> <li>• 86 x 86 x 36mm</li> <li>• incl. wall socket</li> </ul>	170 g

# Sky Window

Recessed or surface mounted luminaire with daylight control and sunlight spectrum



Introduction

Power supply track system

Linear luminaires

Recessed and surface mounted luminaires

Showcase and over cabinet luminaires

Under cabinet luminaires

Accessories

Appendix

# Sky Window

Recessed or surface mounted luminaire with daylight control and sunlight spectrum



# Sky Window

Recessed or surface mounted luminaire with daylight control and sunlight spectrum



Introduction

Power supply track system

Linear luminaires

Recessed and surface mounted luminaires

Showcase and over cabinet luminaires

Under cabinet luminaires

Accessories

Appendix